

MAKING HANDLES TWO DIFFERENT WAYS

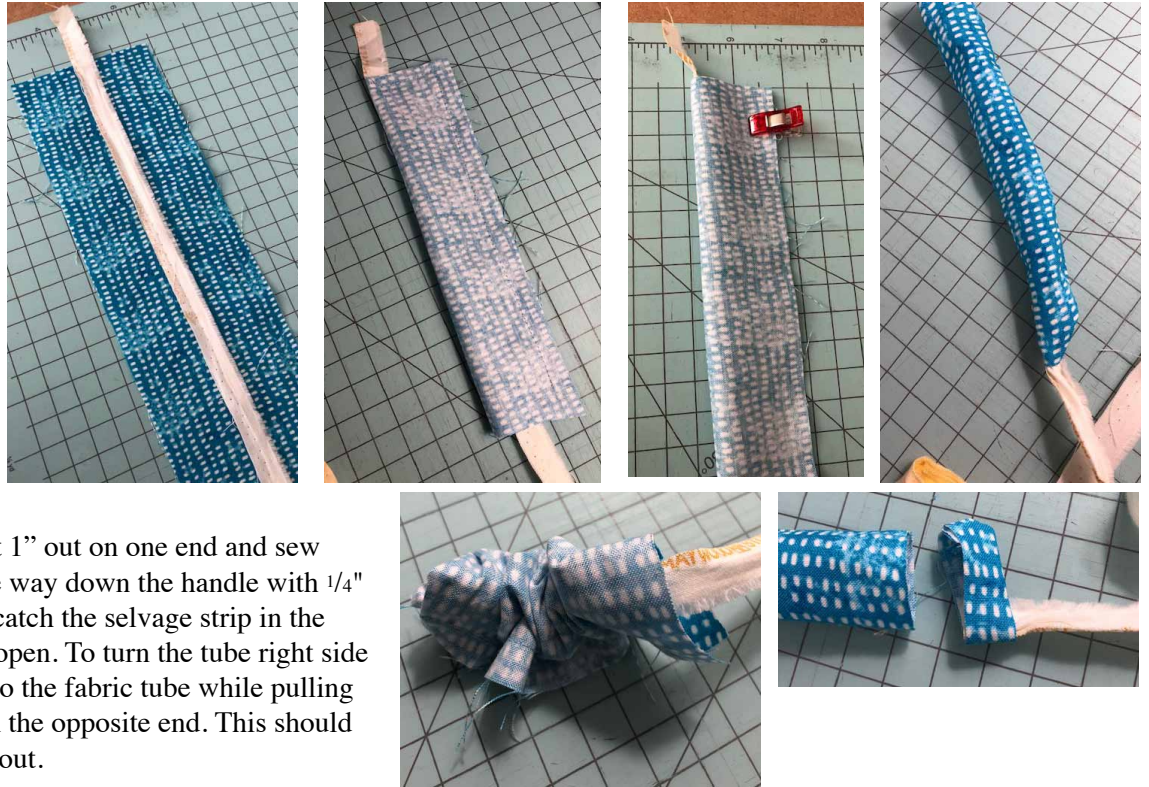
By Linda Sanita

MAKING HANDLES THAT HAVE TO BE TURNED

Some patterns for bags/purses will call for the handles to be turned and then a strapping inserted. Here is that process. Cut the fabric width as directed in the pattern. Fold right sides together down the long side. Unfold and lay a strip of selvage cut from other fabric against the fold of the handles just created. Fold again right sides together making

sure the selvage is at least 1" out on one end and sew across that end and all the way down the handle with $\frac{1}{4}$ " seam making sure not to catch the selvage strip in the stitching. Press the seam open. To turn the tube right side out, tuck the sewn end into the fabric tube while pulling the selvage edge out from the opposite end. This should turn the handle right side out.

Alternative tube turners are available to purchase. Most are like plastic tubes that could be put into one side of the handle. Push the fabric a couple of inches up and then push the fabric end into the tube. Keep pushing until the fabric pokes out the other end of the handle and pull it out completely thus turning the fabric rights sides out. Then take the strapping and attach a safety pin. Insert the safety pin with the strapping attached and push through to the other end. If the pattern calls for handle ends to be finished, have the strapping end about $\frac{1}{2}$ " on each side. Fold the fabric ends over the strapping till it looks straight and finished and sew about $\frac{1}{8}$ " across each end.



MAKING HANDLES THAT DO NOT HAVE TO BE TURNED

Cut the fabric 4 times wider than what the finished handle would be. A 1" handle would need to be cut 4" wide. Iron the cut piece and fold to the middle wrong

sides together finger pressing the fold. Unfold to see the pressed line. Fold each side to the center fold line. Place batting or Strapping to fit under one side of the folded handle. Fold both sides together

and clip. Then sew $\frac{1}{8}$ " on each side. If the pattern calls for the handle ends to be finished, before finger pressing the center fold line, fold each end down $\frac{1}{2}$ " and press. Unfold and cut diagonally from end of fabric to $\frac{1}{2}$ " fold line just created so when the ends are refolded, no fabric is sticking out of the ends. Then continue with the process.

